

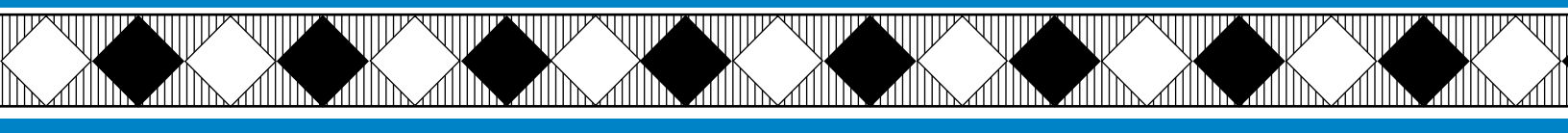


**db**

**Dearborn<sup>®</sup>  
Brass**

# Complete Plastic Tubular

Dearborn Brass, a leading manufacturer of drain components, offers one of the industry's most complete line of plastic tubular products, backed by more than 100 years of experience. Available in 1¼", 1½" and our own patented Form-N-Fit<sup>®</sup>.



# Plastic Tubular: Dearborn Brass gives you the flexi



P/N BLACK	P/N WHITE	DESCRIPTION	CASE QTY.	LIST PRICE
<b>1-1/4" PLASTIC TUBULAR</b>				
	P9700	P-Trap 1-1/2" w/1-1/4" Outlet Boxed	25	3.34
	P9700BG	P-Trap 1-1/2" w/1-1/4" Outlet Polybag	25	3.24
	P9701	P-Trap 1-1/4" Boxed	25	3.47
	P9701BG	P-Trap 1-1/4" Polybag	25	3.37
	P9701DFB	P-Trap 1-1/4" w/Deep Flange Polybag	25	3.70
	P9718	S-Trap 1-1/4" Boxed	25	9.00
	P9791A	Extension Tube 1-1/4" x 12	25	3.65
	P9791E	Double Extension Tube 1-1/4" x 16"	25	5.76
	P9790	Extension Tube 1-1/4" x 6"	25	3.08
	P9009	Deep Flange 1-1/4"	25	0.58
	P9001A	Wing Nut 1-1/4"	100	0.40
	9002A	Beveled Washer 1-1/4"	100	0.09
<b>1-1/2" PLASTIC TUBULAR</b>				
<b>P-TRAPS / J-BENDS / QTR-BENDS</b>				
A9006	P9006	Wall Tube 1-1/2"	25	1.82
	P9008	Repair Trap Elbow 1-1/2"	25	2.39
A9651	P9651	J-Bend 1-1/2"	25	2.86
	P9651B	J-Bend 1-1/2" Polybag	25	2.76
	P9654	Sink-J 1-1/2"	25	2.86
A9702	P9702	P-Trap w/Solvent Weld Adapter	25	3.09
A9702B	P9702B	P-Trap w/Solvent Weld Adapter Polybag	50	2.84
	P9702BT	P-Trap w/Threaded Adapter	25	2.53
	P9702DF	P-Trap w/Solvent Weld Adapter & Deep Flange	25	3.34
	P9702DFB	P-Trap w/Solvent Weld Adapter & Deep Flange Polybag	50	3.09
A9702R	P9702R	P-Trap w/Solvent Weld Adapter	25	
	P9702SB	P-Trap w/Special Solvent Adapter	50	
	P9702T	P-Trap w/Threaded Adapter	25	3.09
A9704	P9704	P-Trap w/Threaded Adapter	25	2.84
	P9704A	P-Trap w/ABS Threaded Adapter	25	3.20
	P9704AB	P9704A Polybag	50	3.10
	P9704BD	P9704B w/Die Cast Nut	50	3.30
A9704B	P9704BG	P-Trap w/Threaded Adapter Polybag	50	2.57
A9704DF	P9704DF	P-Trap w/Thread Adapter Deep Flange	25	3.09
A9704DFB	P9704DFB	P-Trap Thread Adapter Deep Flange	50	2.84
	P9738	Trap 1-1/2" Schedule 40	25	3.95
<b>S-TRAPS / WASHING MACHINE TRAPS</b>				
	P9189S	Washing Machine Trap Solvent Weld	25	7.79
A9720	P9720	S-Trap 1-1/2" Solvent Weld	25	8.89
A9722	P9722	S-Trap w/Thread Adapter	25	8.60
	P9722B	S-Trap 1-1/2" Polybag	10	8.50
<b>DISPOSER KITS</b>				
	P9100TB-12	Telescopic Disposer Kit w/3/4" Branch	25	7.23
	P9100TB-8	Telescopic Disposer Kit w/1/2" Branch	25	7.23
A9100	P9100	Disposer End Outlet 1-1/2" x 13"	25	7.16
	P9100B	Disposer End Outlet 1-1/2" x 13" Polybag	25	7.06
A9100GEB	P9100GEB	Disposer Kit End Outlet 1-1/2" x 15"	25	7.06
A9100T	P9100T	Telescopic Disposer Kit	25	7.19
A9100TB	P9100TB	Telescopic Disposal Hookup, Plastic	25	7.09
A9100WK	P9100WK	Disposer Kit End Outlet 1-1/2" x 13"	25	7.30
	P9100WKT	Telescopic Disposer Kit Waste King	25	7.33
A9103	P9103	Master Disposer Kit	25	10.58
<b>END OUTLET WASTES</b>				
A9108A	P9108A	Waste End Outlet Slip Joint 1-1/2" x 16"	25	5.58
	P9108AB	Waste End Outlet 1-1/2" x 16" Slip Joint Polybag	25	5.48
A9108AT	P9108AT	Telescopic Slip Joint End Outlet	25	6.33
A9108ATB	P9108ATB	Telescopic Waste End Outlet Polybag	25	5.47
	P9108B	Waste End Outlet Slip Joint 1-1/2" x 21"	25	6.22
A9121	P9121	Hi-Line Waste End Outlet 1-1/2" x 16"	25	5.58
A9121A	P9121A	Waste End Outlet Hi-Line/Slip Joint 1-1/2" x 16"	25	5.70
	P9121AB	Waste End Outlet 1-1/2" x 16" Polybag	10	5.60
A9121AT	P9121AT	Telescopic Hi-Line End Outlet	25	6.33
	P9121AT-8	Telescopic Waste End Outlet w/Branch 1/2"	25	6.48
	P9121B	Waste End Outlet Hi-Line/Slip Joint 1-1/2" x 21"	25	6.27
	P9121T	Hi-Line Waste Telescopic	25	6.33

ibility you need to work with every application.



P/N BLACK	P/N WHITE	DESCRIPTION	CASE QTY.	LIST PRICE
<b>CENTER OUTLET WASTE</b>				
A9114A	P9114A	Waste Center Outlet Slip Joint 1-1/2" x 16"	25	7.30
	P9114AB	Waste Center Outlet 1-1/2" x 16" Polybag	25	7.20
	P9114B	Waste Center Outlet Slip Joint 1-1/2" x 21"	25	7.81
A9123A	P9123A	Waste Center Outlet Hi-Line/Slip Joint 1-1/2" x 16"	25	7.30
	P9123AB	Waste Center Outlet 1-1/2" Polybag	10	7.20
	P9123B	Waste Center Outlet Hi-Line/Slip Joint 1-1/2" x 21"	25	7.81
<b>WASTE ARMS</b>				
	P9137	Waste Arm Slip Joint 1-1/2" X 7"	25	2.37
A9137C	P9137C	Waste Arm Slip Joint 1-1/2" X 15"	25	3.03
	P9137D	Waste Arm Slip Joint 1-1/2" X 20"	25	3.49
A9138C	P9138C	Waste Arm Hi-Line 1-1/2" X 15"	25	3.03
<b>BAFFLE TEES</b>				
	P9185	Tee End Outlet	25	3.39
A9186	P9186	Tee w/Baffle Center Outlet, Slip Joint, 1-1/2"	25	3.67
A9187	P9187	Tee w/Baffle End Outlet Hi-Line, 1-1/2"	25	3.49
<b>EXTENSION TUBES / TAILPIECES</b>				
A9786	P9786	Solvent Weld Extension Tube 1-1/2" x 6"	25	1.29
A9786A	P9786A	Solvent Weld Extension Tube 1-1/2" x 8"	25	1.41
A9787A	P9787A	Solvent Weld Extension Tube 1-1/2" x 12"	25	1.82
A9787E	P9787E	Solvent Weld Extension Tube 1-1/2" x 16"	25	2.49
A9792	P9792	Slip Joint Extension Tube 1-1/2" x 6"	25	2.22
A9792A	P9792A	Slip Joint Extension Tube 1-1/2" x 8"	25	2.28
A9793A	P9793A	Slip Joint Extension Tube 1-1/2" x 12"	25	2.78
A9793E	P9793E	Extension Tube 1-1/2" x 16"	25	3.97
A9799	P9799	Flange Tailpiece 1-1/2" x 4"	25	1.02
A9800	P9800	Sink Tailpiece 1-1/2" x 6"	25	1.13
A9801	P9801	Sink Tailpiece 1-1/2" x 8"	25	1.29
A9803	P9803	Flange Tailpiece 1-1/2" x 12"	25	1.74
A9803E	P9803E	Flange Tailpiece 1-1/2" x 16"	25	2.28
AP9816	PP9816	Dishwasher Wye 1-1/2" x 8" Polybag	10	3.48
	PP9816BD	Tailpiece Slip Joint 1-1/2" x 8", 1/2" Branch	25	3.83
AP9817	PP9817	Branch Tailpiece 8" w/Hi-Line Nipple	25	4.29
	PP9817BD	Tailpiece Slip Joint 1-1/2" x 8", 1/4" Branch White	25	3.83
AP9818	PP9818	Branch Tailpiece 8" w/Hi-Line Nipple	25	4.29
AP9819	PP9818	Tailpiece Hi-Line 1-1/2" x 8", 1/2" Branch	25	3.83
	PP9819	Tailpiece Hi-Line 1-1/2" x 8", 3/4" Branch White	25	3.83
	PP9829	Tailpiece Hi-Line 1-1/2" x 8", Threaded 3/4"	25	3.48
<b>MISCELLANEOUS</b>				
	9002	Washer Polyethylene 1-1/2"	100	0.09
	9003	Washer Polyethylene 1-1/4" x 1-1/2"	100	0.10
	P9000	Adapter Solvent Weld	25	0.74
	P9000A	Adapter Threaded w/Nut & Washer	25	1.02
A9001	P9001	Slip Joint Nut 1-1/2"	100	0.26
A9004	P9004	Nipple Hi-Line 1-1/2"	25	0.43
	P9010	White Deep Flange 1-1/2" OD	25	0.56
	P9046A	Trap Offset, 1-1/2"	25	4.35
	P9665	Connector Slip Joint Elbow 45°	25	2.41
	P9675	Elbow Slip Joint 90°	25	2.39
	P9679	Connector Slip Joint 3-Way Tee	25	2.86
	P9793D	Connector Slip Joint 2" Double	25	2.20
	P9141A	Tubing 1-1/2" OD x 6'	10	12.98

**FORM-N-FIT®**

3522205	1-1/2" Flanged Tailpiece w/Nut and Washer	5	6.02
3522215	1-1/4" Pop-Up Assembly	5	12.42
3522355	1-1/2" Slip Joint Tailpiece	5	6.20
3522605	1-1/2" & 1-1/4" P-Trap	5	7.96
3522615	1-1/2" Flanged P-Trap	5	9.22
3522625	1-1/2" Flanged J-Bend	5	8.31
3522635	1-1/2" & 1-1/4" J-Bend	5	7.24
3522645	1-1/2" Sink Trap J-Bend w/Flanged Tailpiece	5	7.73
3522845	1-1/2" & 1-1/4" Slip Joint Coupling, Extends	5	5.62
3526945	1-1/4" Slip Joint Tailpiece	5	5.71
3526955	1-1/2" Universal Combination Flanged Tailpiece	5	6.18

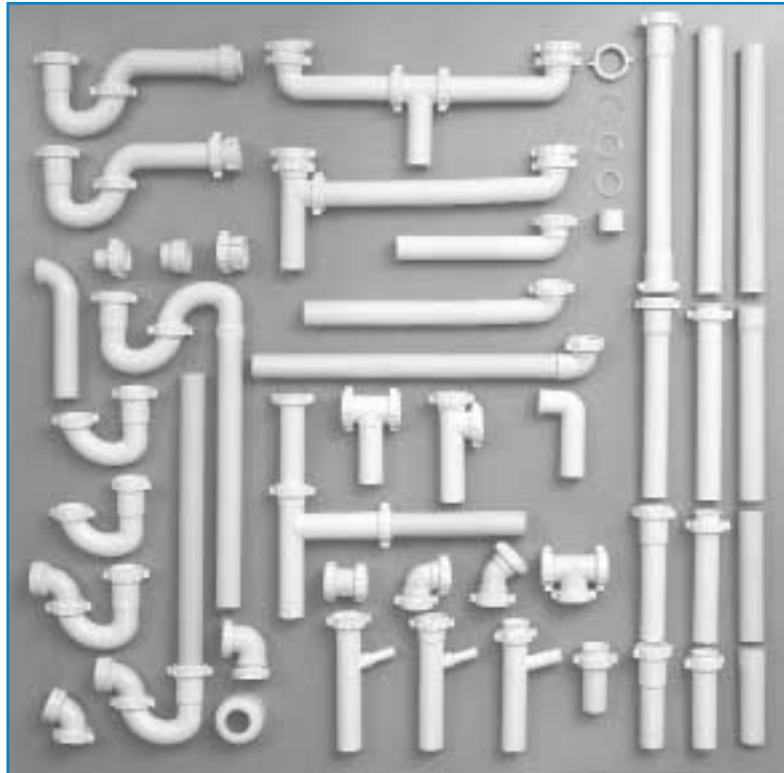
# Outstanding Features:

- ◆ Easy to install; Requires no special tools
- ◆ Lightweight and strong
- ◆ Most connections hand tighten
- ◆ In 1¼" & 1½" to fit any existing system
- ◆ Chemical resistant
- ◆ Won't rust regardless of water chemical content
- ◆ Manufactured to precise industry standards
- ◆ Works well with both brass and plastics
- ◆ Available boxed, bagged, bulk or carded
- ◆ No sealing compounds necessary
- ◆ Form-N-Fit® holds shape without spring back
- ◆ Form-N-Fit® is adaptable: offsets up to 4¼"

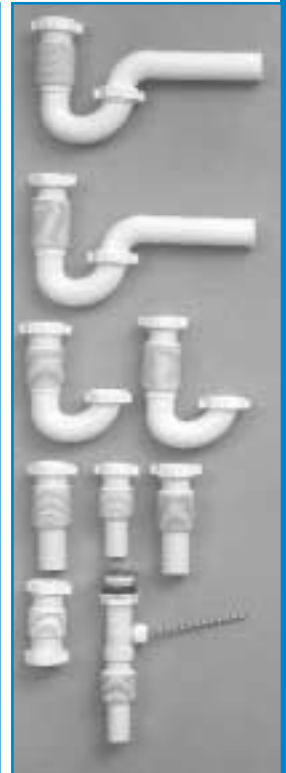
1¼" Tubular



1½" Tubular



Form-N-Fit®



Dearborn Brass/21st Century, P.O. Box 1020, Tyler, Texas 75710-1020

Phone Orders: 1(800)527-8443

Fax Orders: 1(800)488-5763